

Esprayer

**ES-2000**

Esprayer multi

# Installation Instructions

Fuence Co., Ltd.

1/20

## Contents

|  |    |
|--|----|
| 1. The driver for the video capture card                 |    |
| Installation.....  | 3  |
| • Installation instructions for the driver               |    |
| • Installation instructions for the video capture card.  |    |
| 2. Setting up the video capture card                     |    |
| .....  | 12 |
| 3. Installation instructions for Esprayer multi Ver.1.1. |    |
| .....  | 16 |

# Installation Instructions for the driver of the video capture card

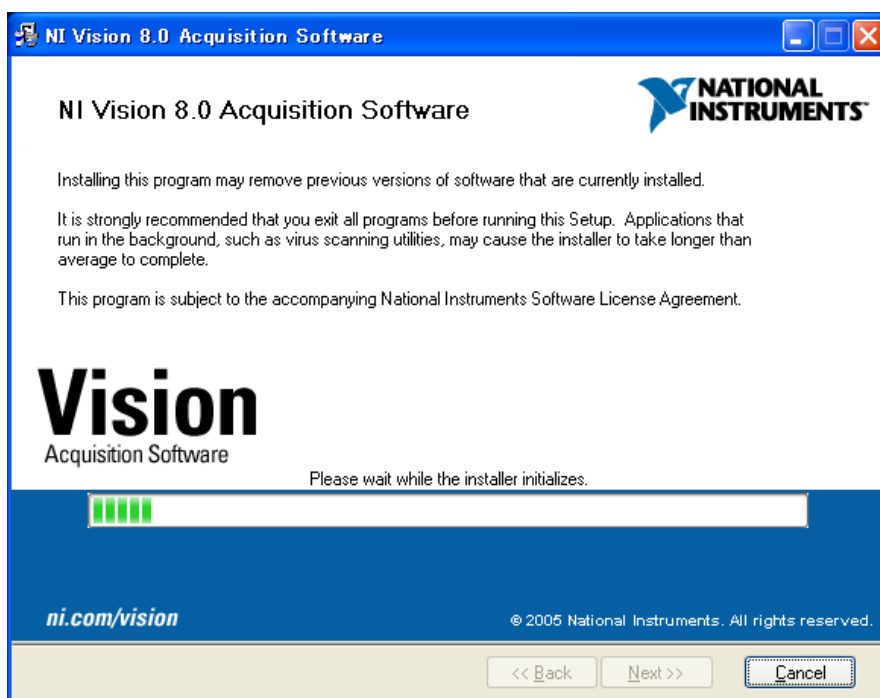
1.

First ~~is-are~~ the installation procedures for “NI Vision Acquisition Software,” the driver for the video capture card.

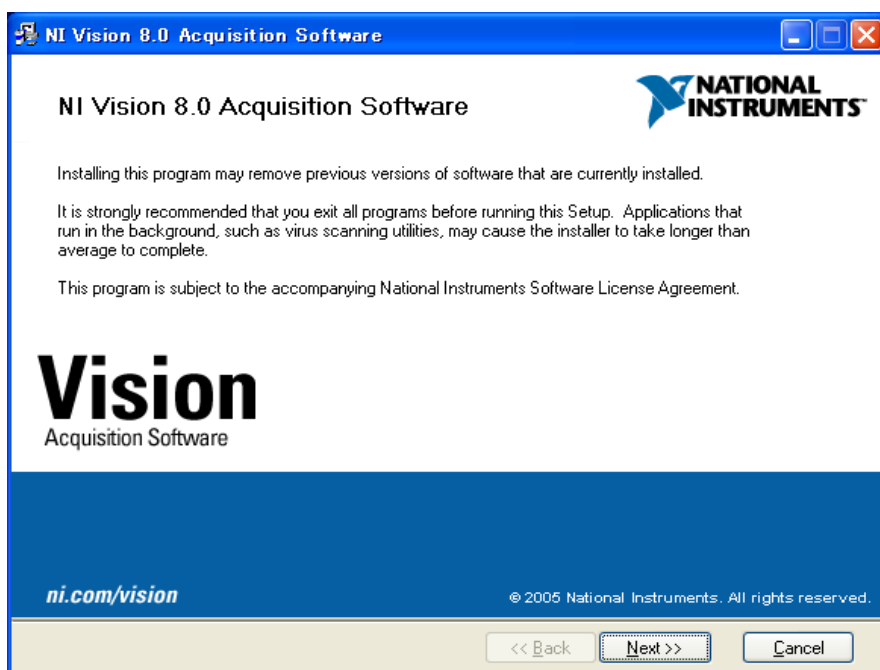
- 1) Set the “NI Vision Acquisition Software” CD-ROM in the CD drive of the computer.
- 2) ~~Below window appear~~The window below appears. Click [Install NI Vision8.0 Acquisition Software] in the window.



3) Wait for a moment while the software is being formatted.



4) After the completion of the formatting, the window ~~shows below contents shown below appears;~~ then click [Next>>].



- 5) Type in the serial number of the “NI Vision Acquisition Software” CD-ROM ~~on~~ given in [Install] this product using the following serial number] and click [Next>>].

NI Vision 8.0 Acquisition Software

**User Information**  
Enter the following information.

NATIONAL INSTRUMENTS

Full Name:

Organization:

Install this product using the following serial number

Serial Number:

Install this product for evaluation

<< Back   Next >>   Cancel

- 6) Click [Next>>] without changing the default setting.

NI Vision 8.0 Acquisition Software

**Destination Directory**  
Select the primary installation directory.

NATIONAL INSTRUMENTS

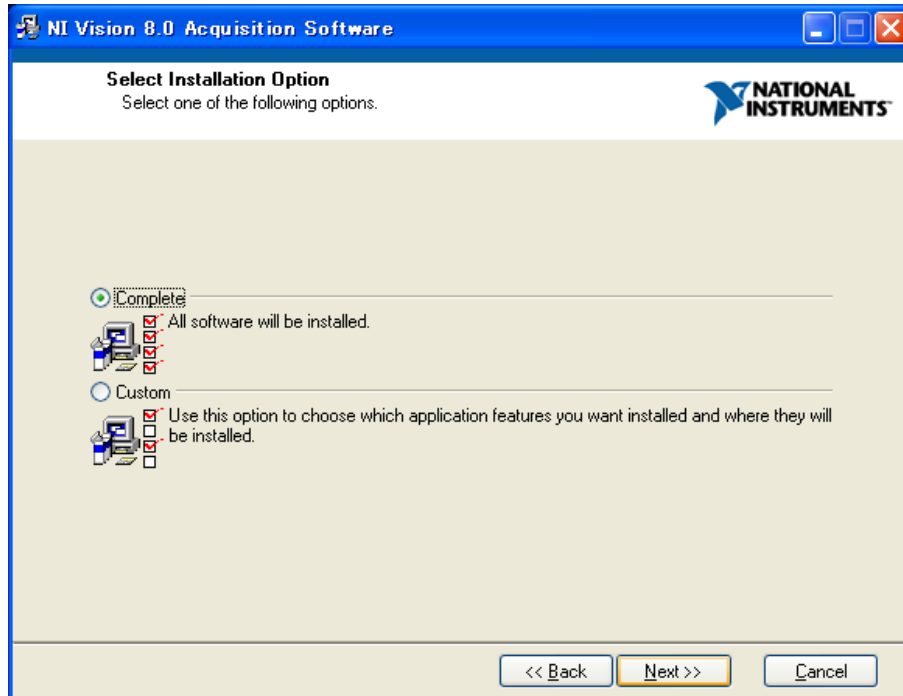
All National Instruments software will be installed in the following folder. To install into a different folder, click the Browse button, and select another folder. To choose individual component locations, choose "Custom" installation type on the next dialog.

Destination Directory

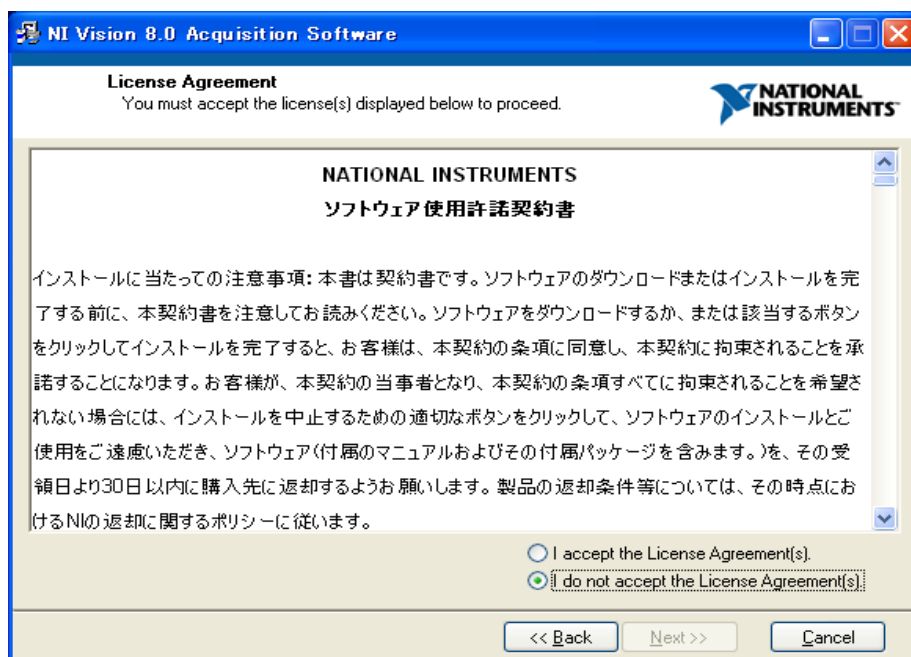
  Browse...

<< Back   Next >>   Cancel

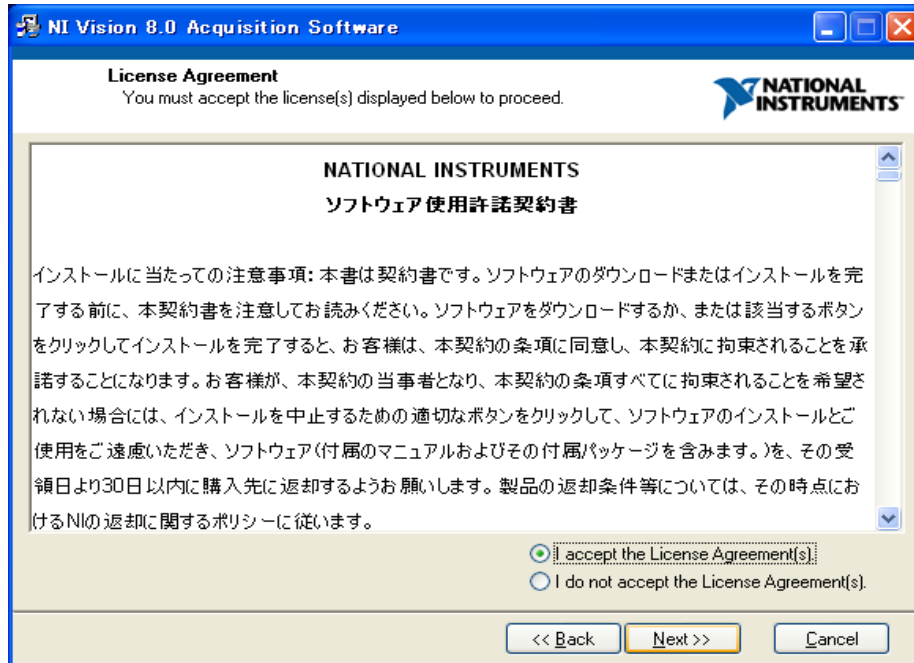
7) Click [Next>>] without changing the default setting.



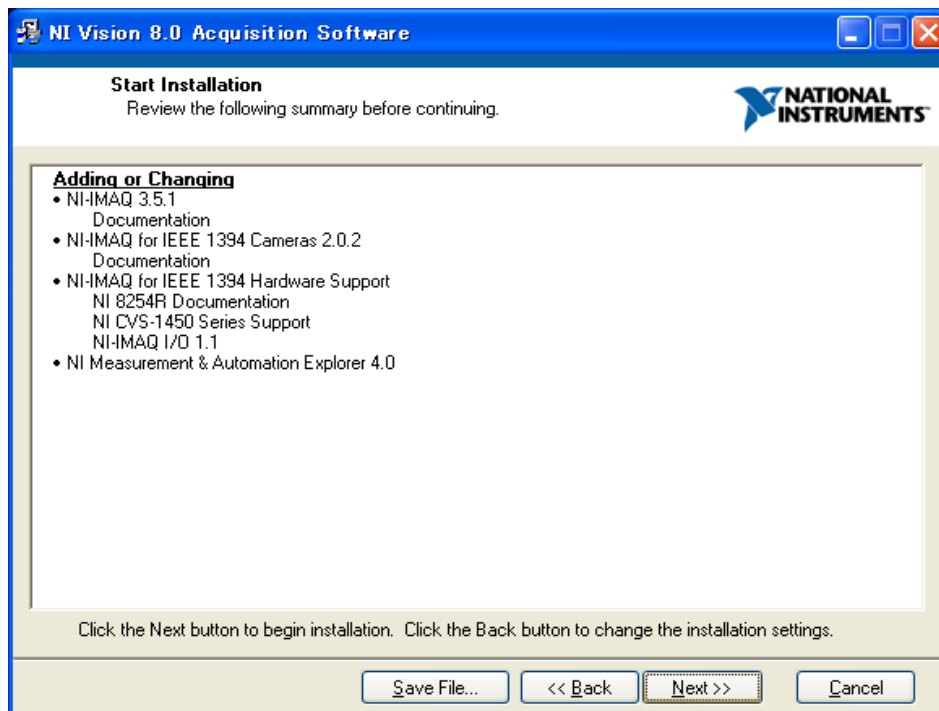
8) Choose [I accept the License Agreement(s)].



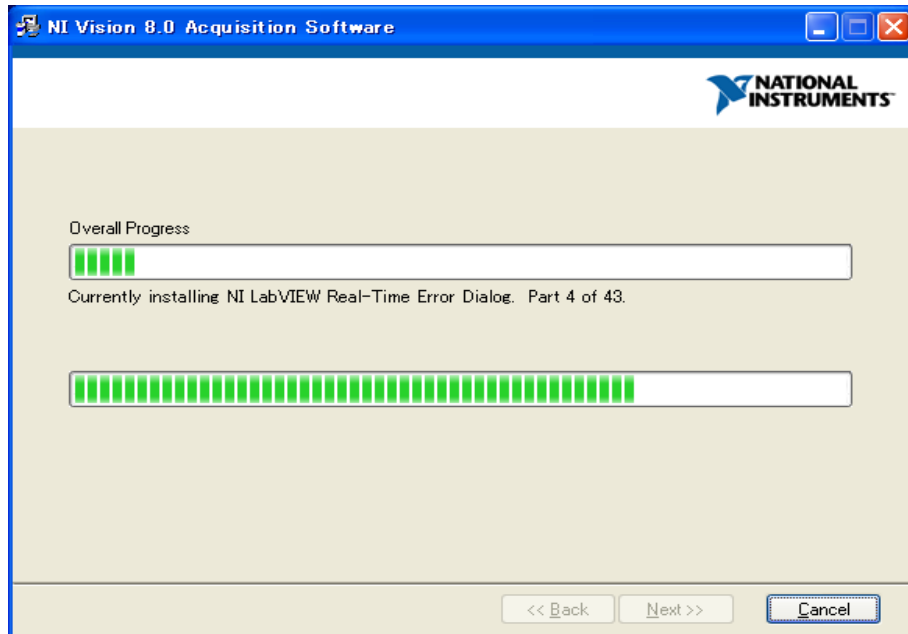
9) After choosing [I accept the License Agreement (s).], click [Next>>].



10) Click [Next>>].



- 11) Installation of “NI Vision Acquisition Software” ~~starts~~will start. Wait until it is finished.



- 12) ~~Installation~~The installation of the “NI Vision Acquisition Software” is completed. Close the window by clicking [Finish].





Next ~~is-are~~ the instructions ~~to-for~~ installing the video capture card into the computer.

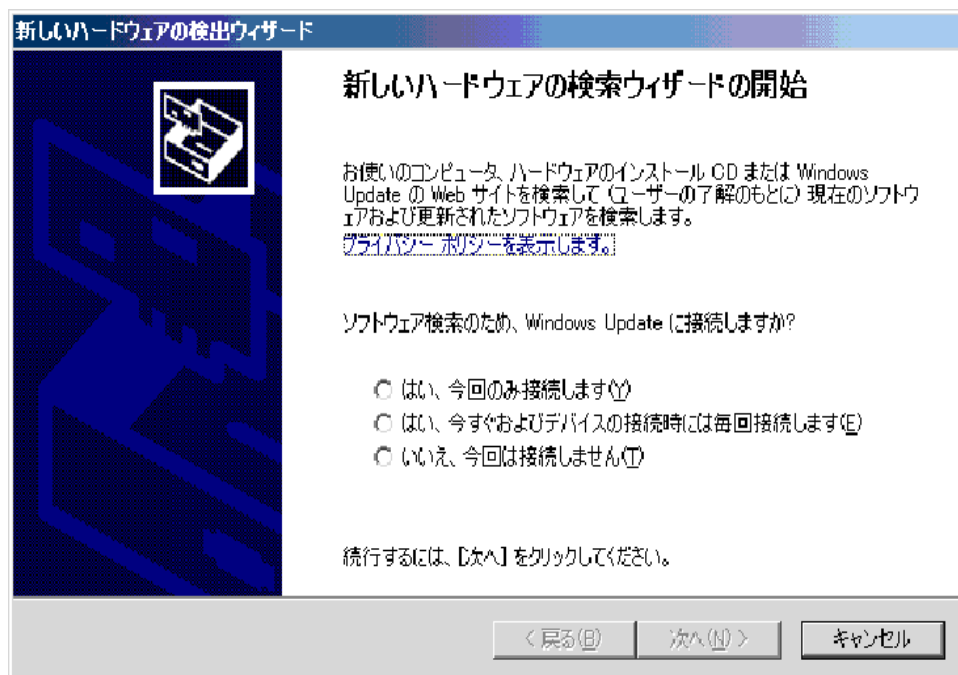
13) **Turn off the computer** and set the video capture card (PCI-1405) into the PCI slot (expansion card).

\*Refer to the computer manual at hand for more details.

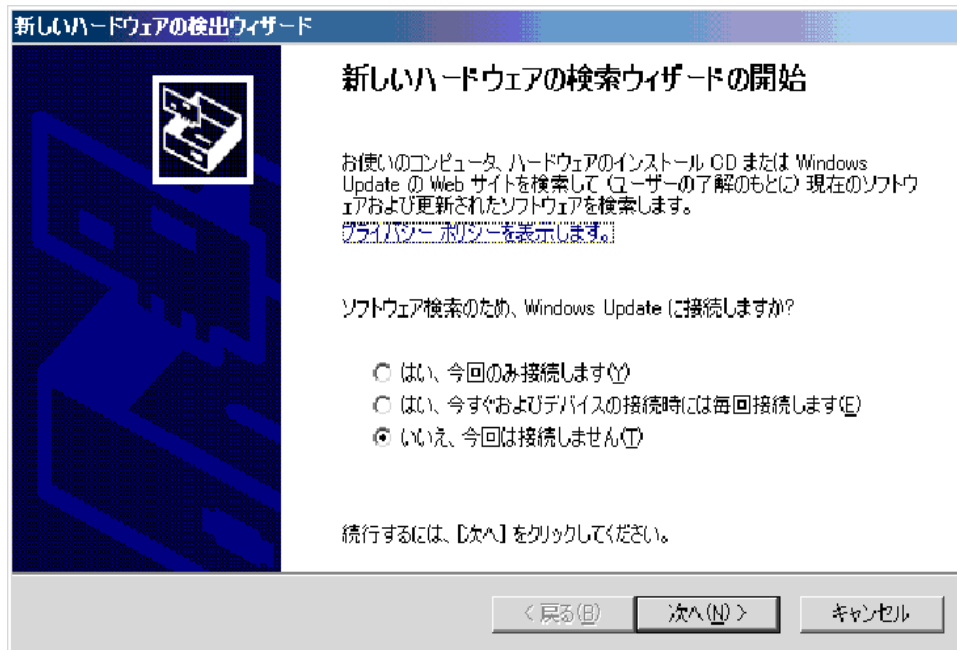
Connect the BNC connector ~~of-at~~ the back of the device and the side of the computer with the BNC cable (black). (Refer to the computer manual for the location of the jack.)

When ~~booting-starting up~~ the computer, the search wizard ~~of-the-for~~ new hardware

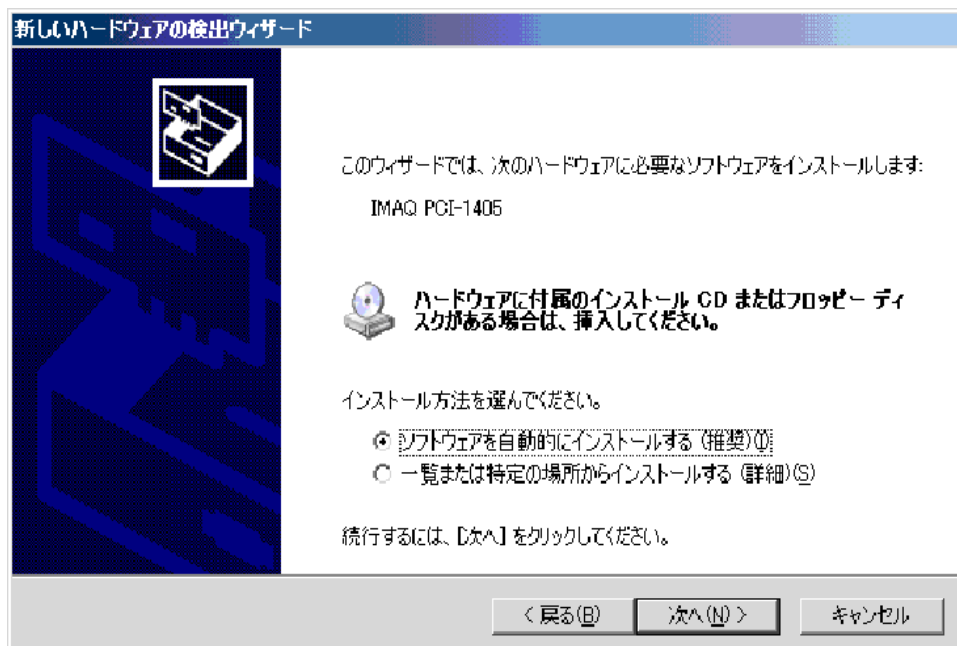
starts will be activated.



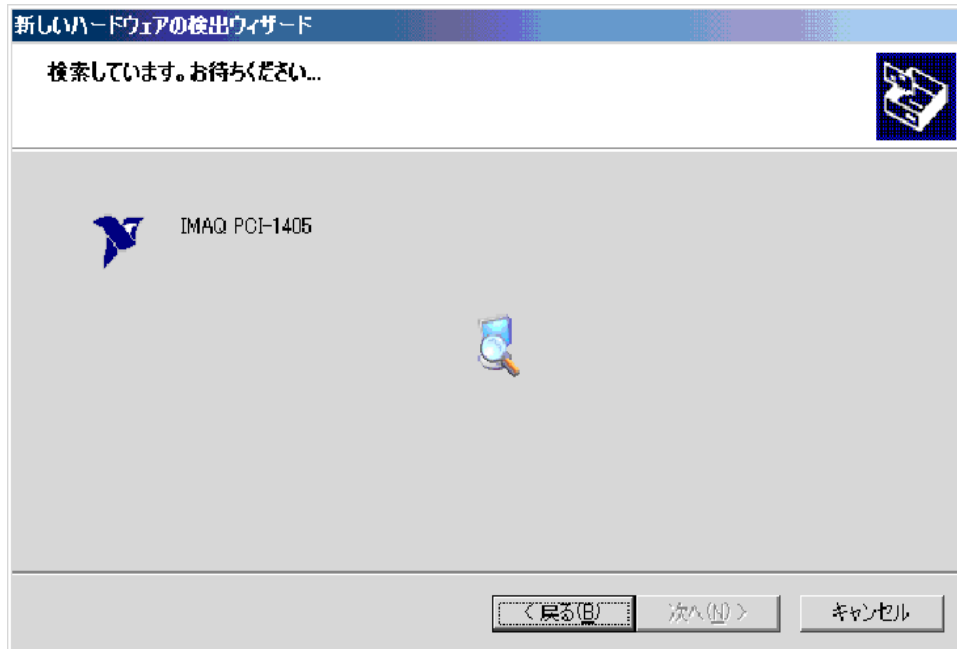
14) Choose [No, I am not going to connect this time (T)], and click [Next(N)].



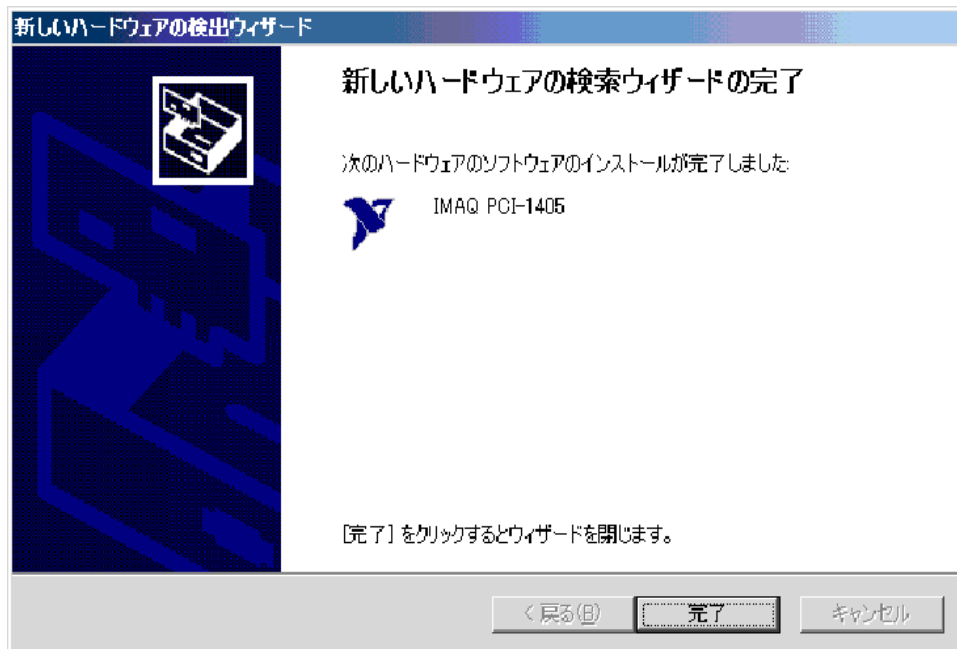
15) If the video capture card is installed into the computer, "IMAQ PCI-1405" will be detected. Choose [Automatically install the software (Recommended) (Y)] and click [Next(N)].



16) Wait until this process is completed.



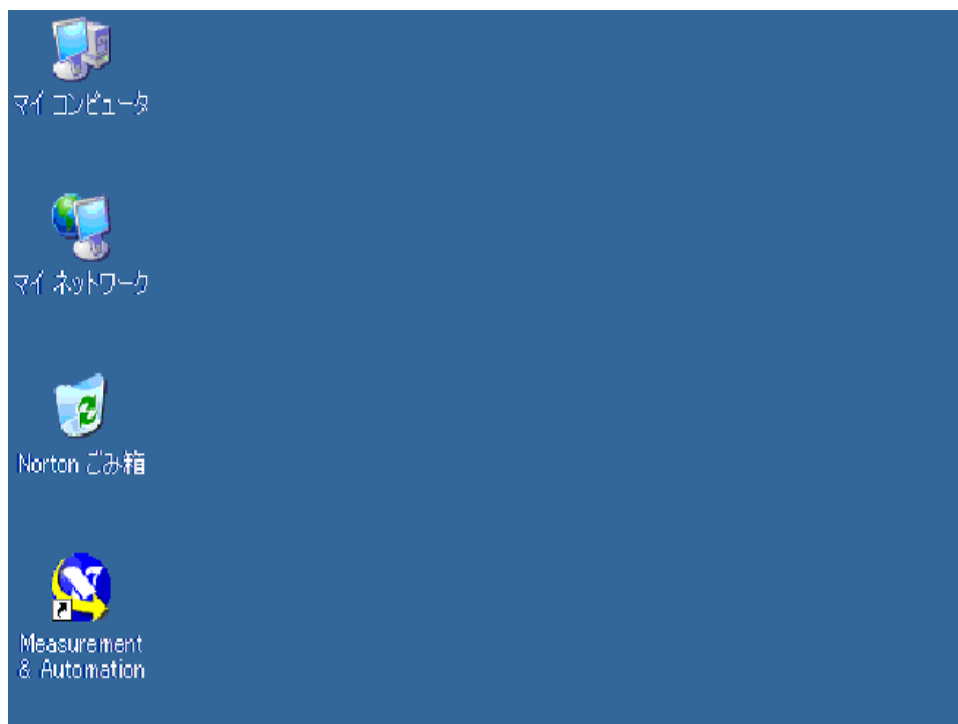
17) The installation of the image board (PCI-1405) driver is completed. Click **[Finish]** and ~~finish~~close the wizard.



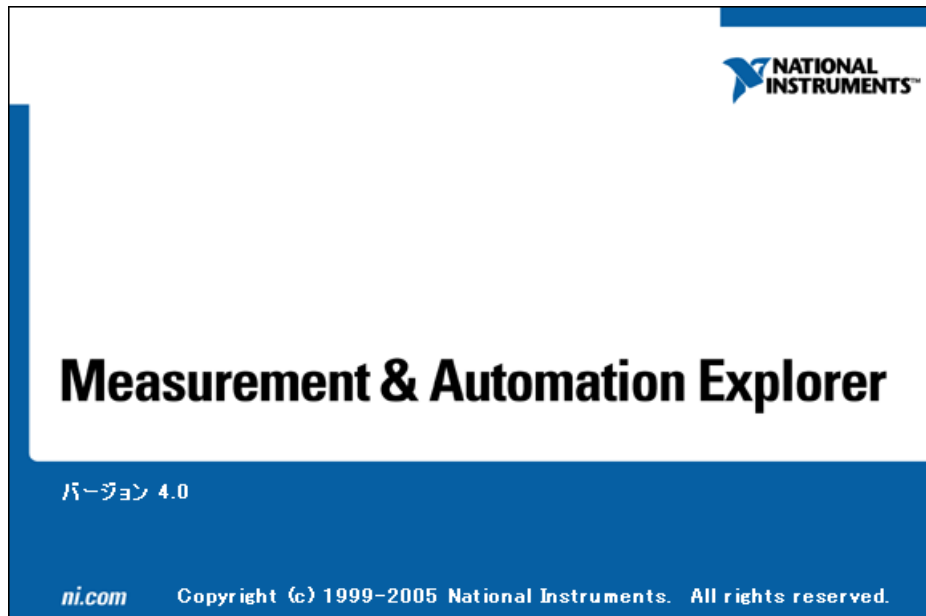
## 2. Setting up the video capture card

These are the setup instructions for the video capture card.

- 1) Turn off the device.
- 2) Double-click the icon on the desktop of the computer, which says “Measurement & Automation”.



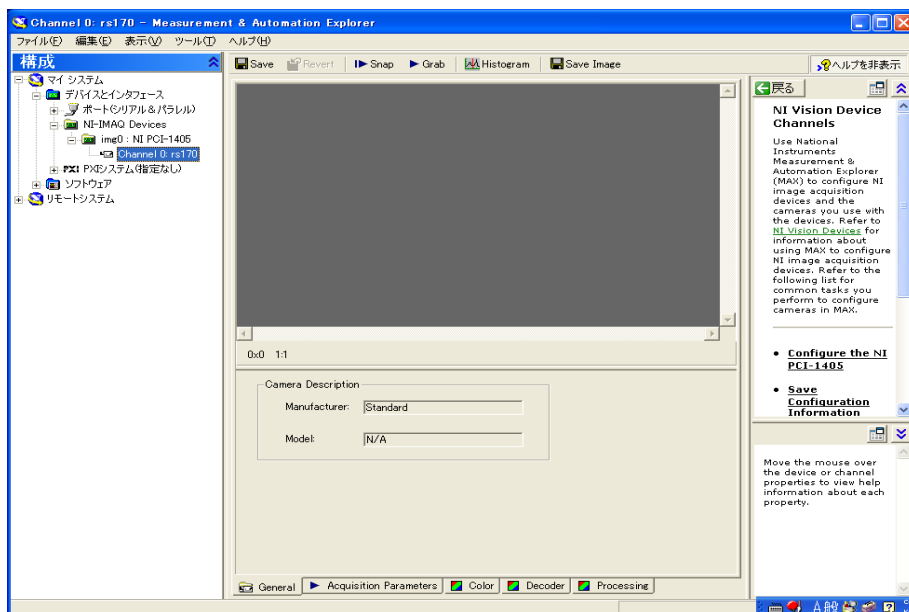
- 3) ~~Measurement~~-The Measurement & Automation Explorer starts.



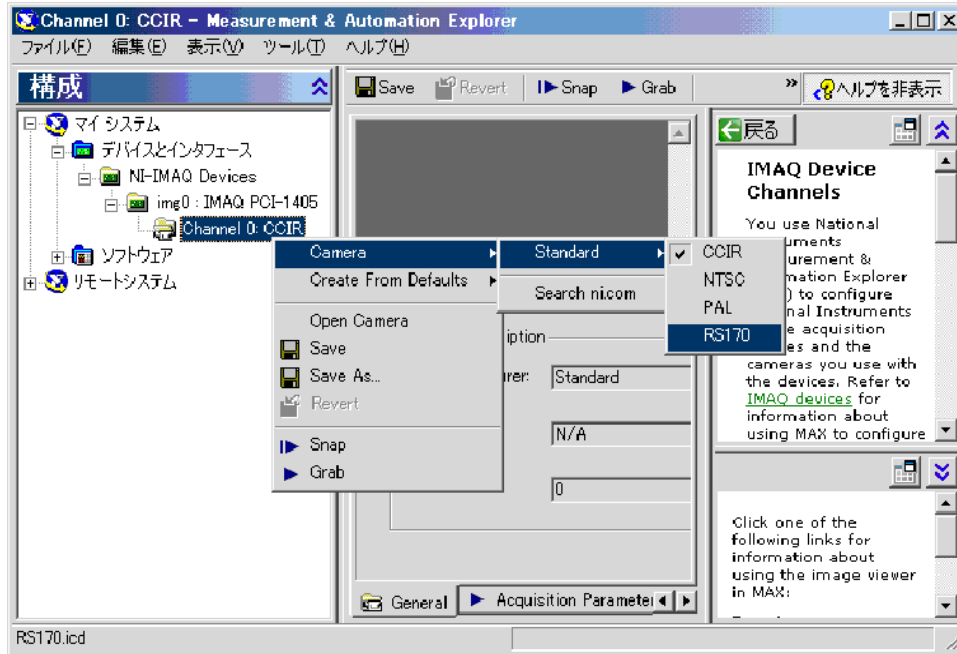
- 4) The window with the title of “マイシステムーMeasurement & Automation Explorer” appears.



- 5) There is ~~the a~~ tree diagram on the left side of the window. ~~Choose in the order~~ Select with the sequence of [マイシステム→デバイスとインターフェイス→NI-IMAQ Devices→img0 : IMAQ PCI-1405→Channel 0: CCIR] from the diagram.

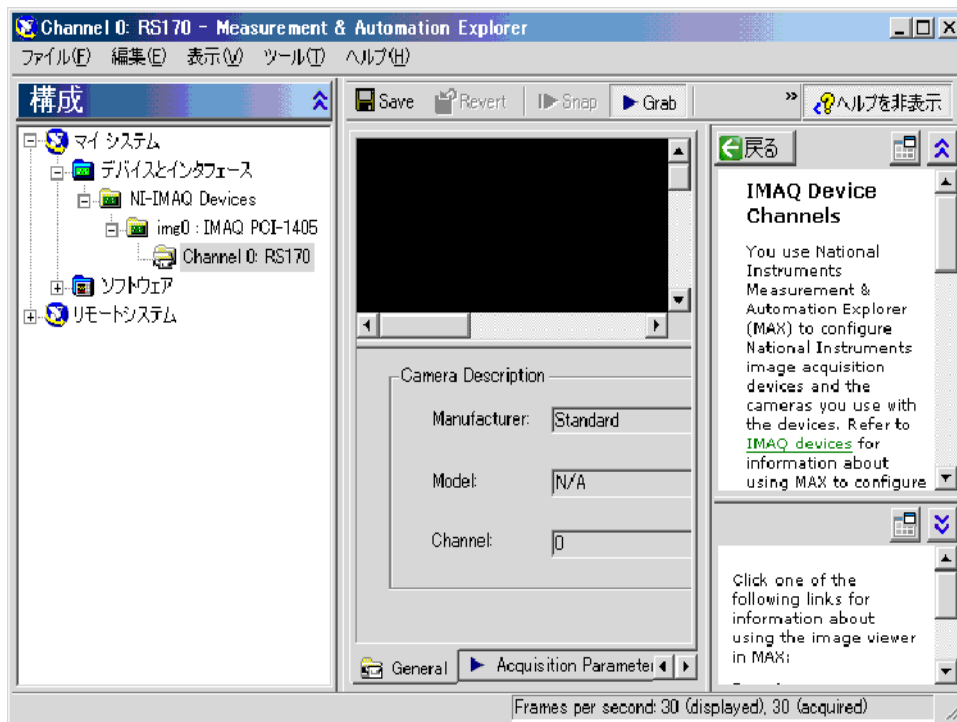


- 6) By right clicking [Channel 0: CCIR], ~~choose in the order of~~ select with the sequence [Camera→Standard→RS170].



- 7) Confirm if the image from the camera is shown by clicking [Snap] or [Grab] on the right side.

After confirming that the image from the camera is shown, close the Measurement & Automation Explorer.



## 3. Installing Esprayer multi Ver1.1

---

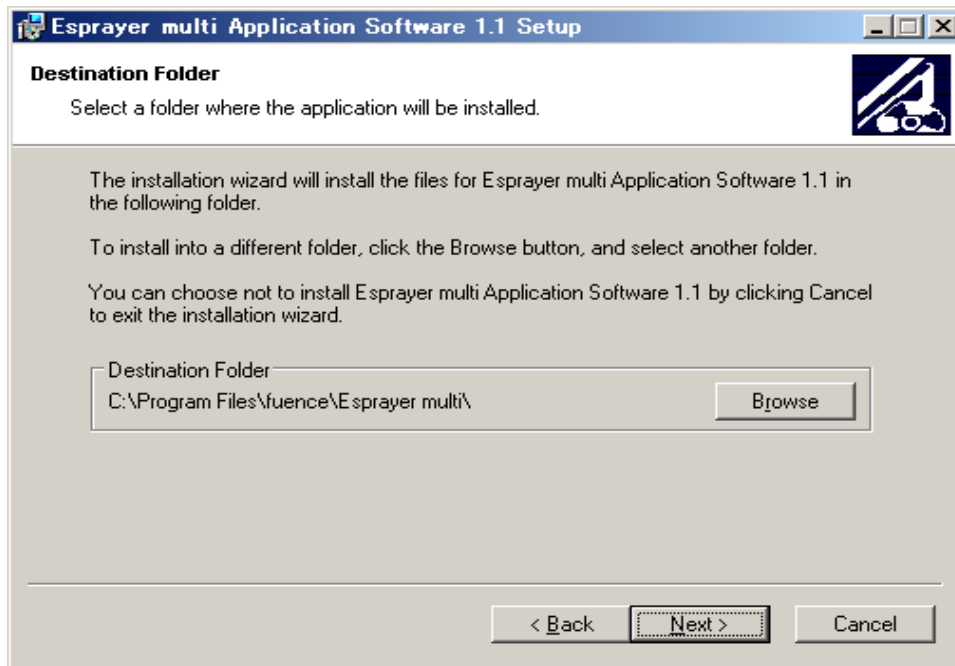
These are installation instructions for **Esprayer multi Ver1.1**.

- 1) Set the "Esprayer multi Ver1.1" CD-ROM into the CD drive of the computer.
- 2) Start ~~setup.~~ with the computer icon in the -installer folder.  
When ~~below-the~~ window below appears, click [Next>].

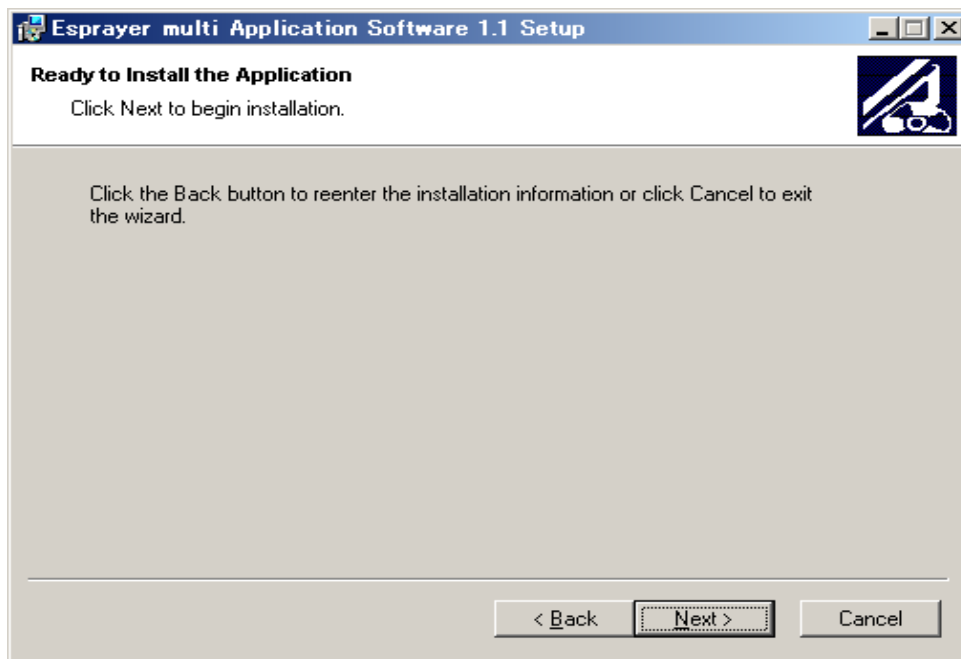




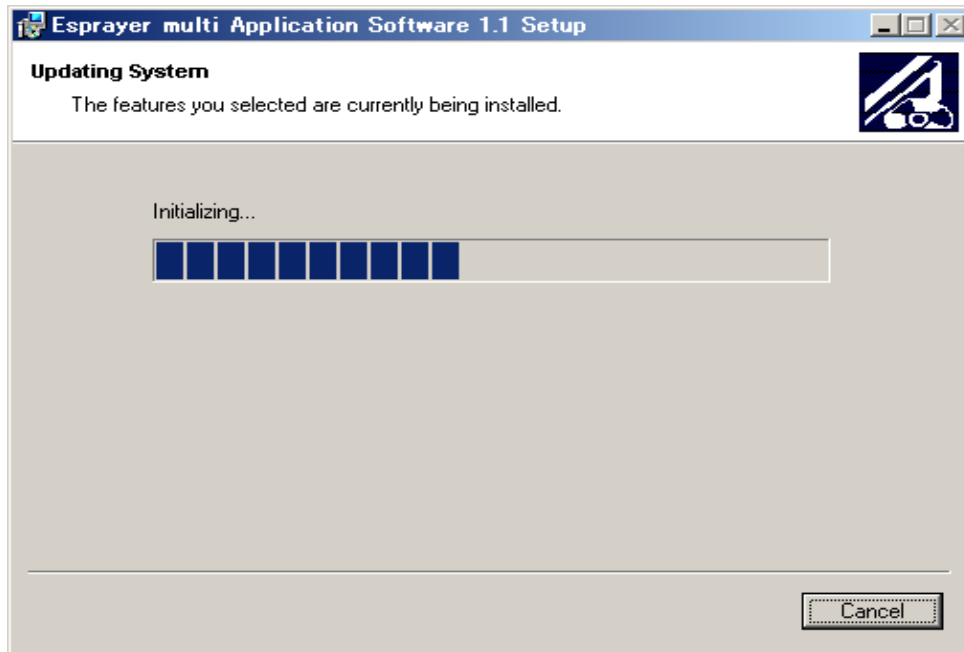
3) Click [**Next**>] without changing the default setting.



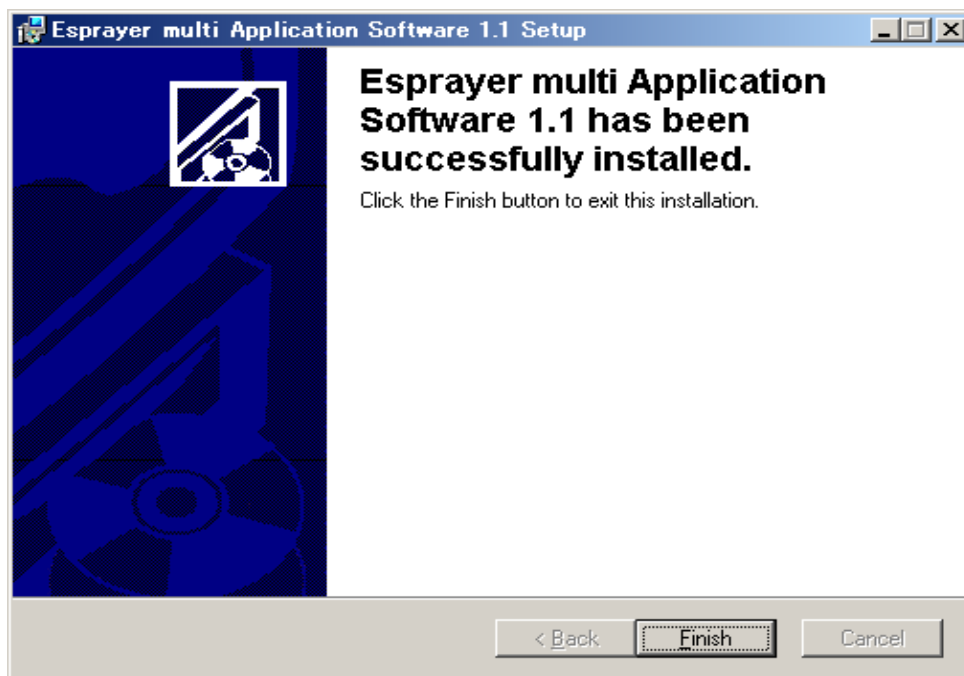
4) Click [Next>].



5) Installation has started. Leave the window as it is until the installation is completed.



- 6) The installation of Esprayer multi Ver.1.1.1 is completed. Close the window by clicking [Finish].



## Fuence Co., Ltd.

Main Office AIOS Hiroo building #703, 1-11-2, Hiroo, Shibuya-ku, Tokyo 150-0012  
JAPAN  
TEL : 03-5792-5415 FAX : 03-579-5416

Wako Office Wako Riken Incubation Plaza #207, 2-3-13, Minami, Wako-shi, Saitama  
351-0104 Japan  
TEL : 048-462-1138 FAX : 048-462-1169